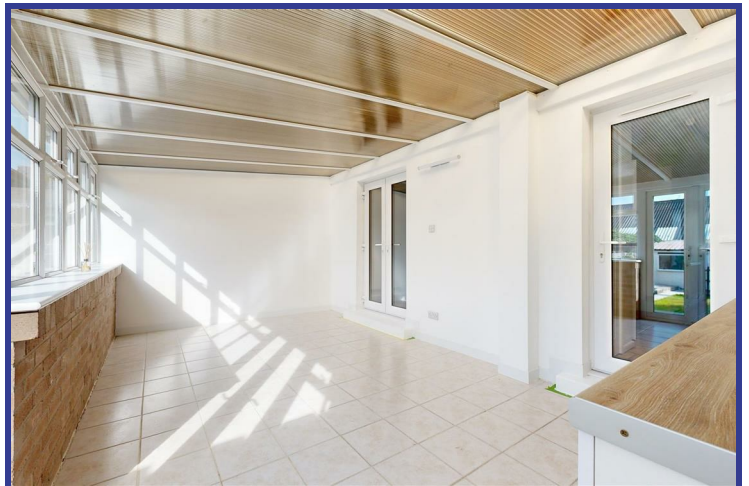




14 Lower Putton Lane

Weymouth, DT3 4AN

£1,300 PCM



AVAILABLE MID SEPTEMBER

This three bedroom terraced house with DRIVEWAY will be available for long term let from the middle of September. With a generous downstairs accommodation, as well as being conveniently located to nearby schools, this will make the perfect home for a family.

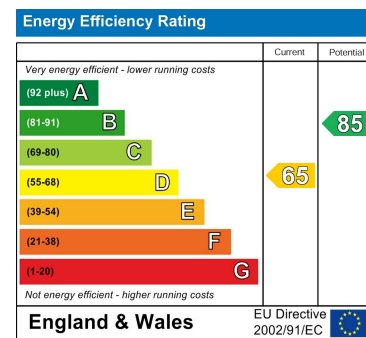
The home comprises a spacious lounge with plenty of room for a dining table and chairs. The left side of the house is the kitchen, benefiting from ample counter top space as well as built in cupboards that can be used as a pantry. To the back of the house is the spacious conservatory space, the room opens up a range of possibilities and could be used as a dedicated dining space, secondary lounge or children's play room. Upstairs are three bedrooms, with two GENEROUS DOUBLE BEDROOMS, as well the third bedroom which is perfect for a children's bedroom or office space. Completing the upstairs is the family bathroom.

To the front of the home you have a PRIVATE DRIVEWAY for up to two cars. To the rear is a well maintained SOUTHERLY garden, lined by fruit trees, as well as a large potting room. There is also a GARAGE which can either be used as additional parking or the perfect place for storage, available for an additional £50 PCM.

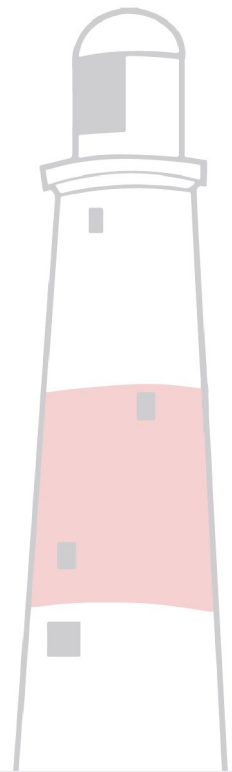
Area Map



Energy Efficiency Graph



Floor Plans



These particulars, whilst believed to be accurate are set out as a general outline only for guidance and do not constitute any part of an offer or contract. Intending purchasers should not rely on them as statements of representation of fact, but must satisfy themselves by inspection or otherwise as to their accuracy. No person in this firm's employment has the authority to make or give any representation or warranty in respect of the property.

12 Easton Street, Portland, Dorset DT5 1BT